



*A flying start for all 0 – 4 year olds in
Canklow, Ferham, Masbrough,
Thornhill and the Town Centre*

Sure Start at the Ferham Centre

Central contact point

Staff base

Childcare

Activities

Training

Information

Outreach



A Multi-agency Team

- Rotherham MBC core team
- Oral Health (PCT)
- Speech and language service (PCT)
- STEPS Child Mental Health (PCT)
- Parent 2 Parent
- Pre-school Learning Alliance
- All Pakistan Women's Association
- National Childbirth Trust
- Health Visiting (Ferham Clinic)
- Ferham School Foundation Unit

CHILDREN AGED 0-4

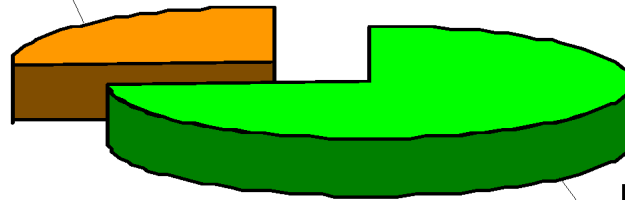
LIVING IN THE AREA :

802

REGISTERED WITH SURE START:

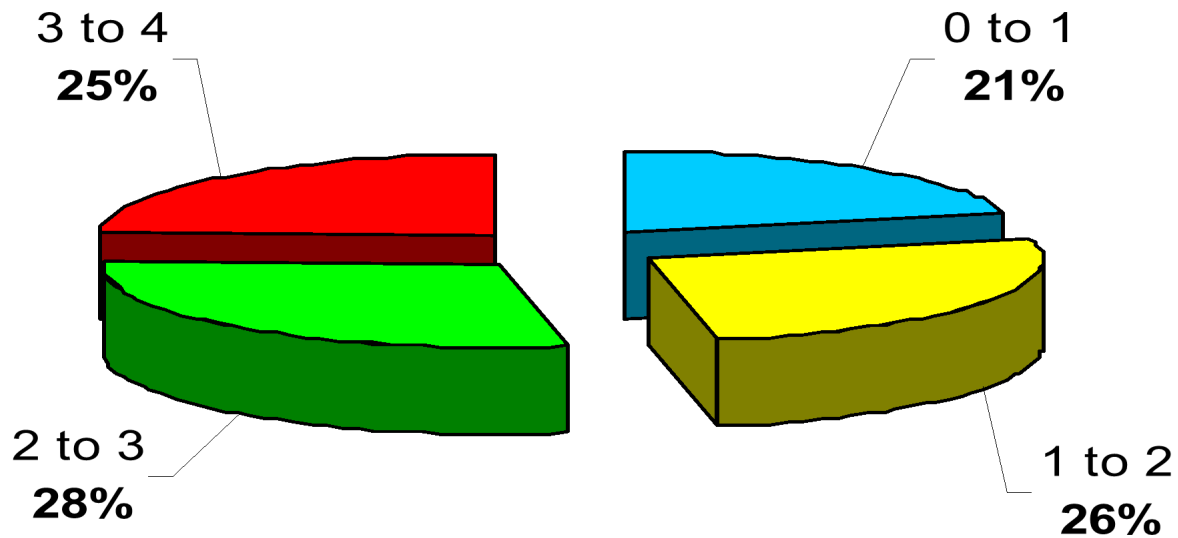
598

Children Not
Registered With
Sure Start
25%

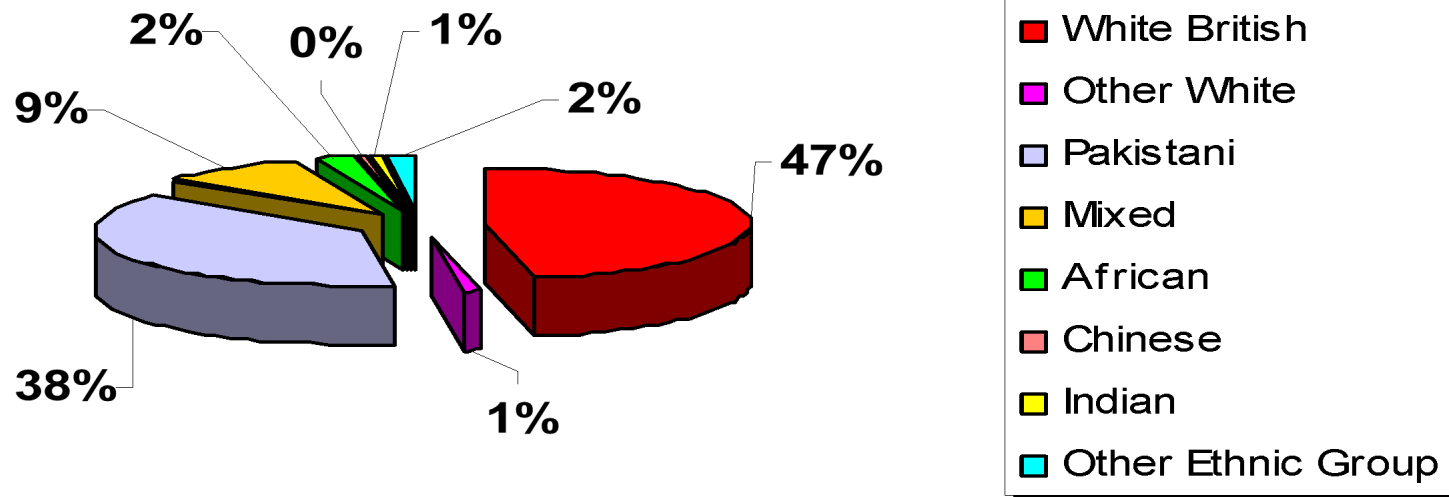


Children
Registered With
Sure Start
75%

Ages of Children Registered



Ethnicity of Children Registered



Services and Activities

Training for parents and carers

Bumps and Babes

Baby Massage

Stay and Play

Cook and Eat

Keep Fit

Trips and events

Family Support

Childcare to support activities



Parent Involvement

Sure Start Partnership
Board

Peoples Voice

Newsletter production

Community Research

Crèche Work

Breast Feeding Support



Achievements 2002 - 2005

- Services and activities being delivered
- Families registered with Sure Start
- Establishment of base at Canklow
- Childcare and Play Base at Canklow Woods
- 4 Playgrounds in partnership with SRB
- Ferham Centre
- Childcare and Play Base at Thornhill
- Childcare registered with Ofsted

Budget

- Revenue

- 2002 – 2003 £358,000

- 2003 – 2004 £531,000

- 2004 – 2005 £597,500

- 2005 – 2006 £613,000

- 2006 – 2007 £613,000

Capital

- 2006 - 2006 £1,000,000

Children's Centres in Rotherham

- 3 Sure Start Programmes
Maltby, Rawmarsh, Central
- 2 Early Excellence Centres
Aughton, Arnold
- 7 Primary Schools
Wath, Dinnington, Thrybergh, Dalton,
Rockingham, Kimberworth, Coleridge

Every Child Matters

Outcomes for Children and Young People

- Be healthy
- Stay Safe
- Enjoy and Achieve
- Make a Positive contribution
- Achieve Economic Well-being

Rotherham Central Children's Centre

